



1 2



5 6



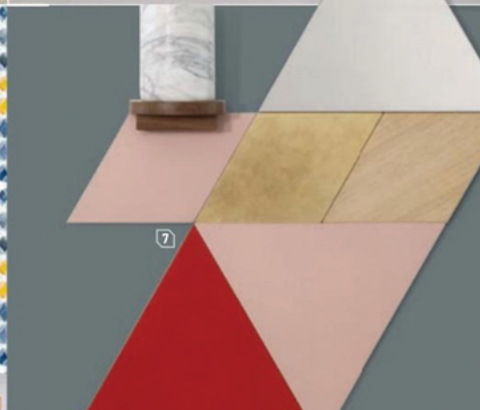
4



3



8



7

## marketPLACE



1 2



3 4



2-ALEXANDRA (CUMENARES) (PRODUCT AND PORTRAIT); 4-SUSAN SHACTER (PORTRAIT)

**Lindsey Price Criswell and Donnie Criswell of Denver Modern**

**product** Tundra  
**standout** The Colorado-based husband-wife duo uses leather braces and brass hardware to hold oak shelves in place, while a sliding steel door adds clever peekaboo storage to the cabinet below. [denvermodern.com](http://denvermodern.com)

**Ana María Gómez of amgs**

**product** A Boi  
**standout** The Brussels-trained designer traveled to Cucunubá in her native Colombia to collaborate with weaver William Contreras on unique Peruvian alpaca textiles that blend craft and contemporary design. [anamariagomez.me](http://anamariagomez.me)

**Josh Metersky and Aiden Bowman for The Future Perfect**

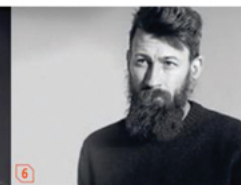
**product** Lescaze  
**standout** The Trueing co-founders imagined a seat in anodized aluminum and cast-glass brick, its name a reference to the noted modernist, who utilized glass brick for a Manhattan town house facade in 1934. [thefutureperfect.com](http://thefutureperfect.com)

**Brecht Wright Gander of Birnam Wood Studio**

**products** Total Garbage and Magritte  
**standout** Co-dependent aluminum cantilevered shelving only functions when balanced by soil placed in the planter bin, thus allowing for object display, while an ombre blue aluminum stand corrals umbrellas. [birnamwoodstudio.com](http://birnamwoodstudio.com)



5



6



7 8



**Jude Heslin Di Leo of Jude Heslin Di Leo**

**product** Gibbous  
**standout** Tracings of the lunar calendar led the designer to the curvaceous form of these bleached-maple armchairs, softened by bridle-leather seats and backrests, which pair well with a table from the same collection. [judeheslindileo.com](http://judeheslindileo.com)

**Riley McFerrin of Hinterland**

**product** Field  
**standout** A modern take on the classic army cot by the Vancouver, B.C., studio tops a whitewashed white-ash base with an overstuffed upholstered cushion, lashed to the frame via rope and secured by brass pegs. [hinterlanddesign.com](http://hinterlanddesign.com)

**Fanae Aaron of Parts + Assembly**

**product** Amelia  
**standout** The Los Angeles-based designer (and Sci-Arc graduate) crafts made-to-order mirror compositions in myriad materials including tinted mirror, raw brass, and lacquered steel. A sturdy integrated walnut shelf holds treasures. [partsandassembly.com](http://partsandassembly.com)

**Sarah Von Dreele of Sarah Von Dreele**

**product** Betsy  
**standout** The branding consultant turned artist's paintings are reborn as wallpaper digitally printed using water-based inks on nonwoven grass cloth or metallic substrates and named for important people from her life, in this case her mother. [sarahvondreele.com](http://sarahvondreele.com)